

## FILEMAKER SERVER 10 ADVANCED MAXIMIZE YOUR DATABASE SHARING CAPABILITIES!

FileMaker® Server 10 Advanced includes all the features in FileMaker Server 10 plus Instant Web Publishing capabilities, ODBC/JDBC connectivity and higher FileMaker Pro connection limits. Whether over a network or on the web, FileMaker Server 10 Advanced maximizes your database sharing and connectivity capabilities, easily and securely.

### New in FileMaker Server 10 Advanced

Get higher connection limits, more time saving tools, maintenance enhancements, and faster ways to create PHP websites

- **New!** Support up to 999 FileMaker users at the same time
- **New!** Schedule import and export scripts for automated reporting.
- **New!** Send Mail via SMTP directly from FileMaker Server; no email client needed.
- **New!** Schedule automatic database verification tests to check for consistency and errors.
- **New!** Get a snapshot of your database logs to quickly pinpoint trouble spots.
- **New!** Get 10 PHP Site Assistant themes to create visually stunning websites in minutes.
- **New!** Use the built-in PHP Preview to look at your websites before publishing them live.

### More Simultaneous User Connections

If you need to connect larger groups of FileMaker users, only FileMaker Server 10 Advanced supports up to 999 FileMaker Pro users\* at the same time – 4x more users than in FileMaker Server 10.

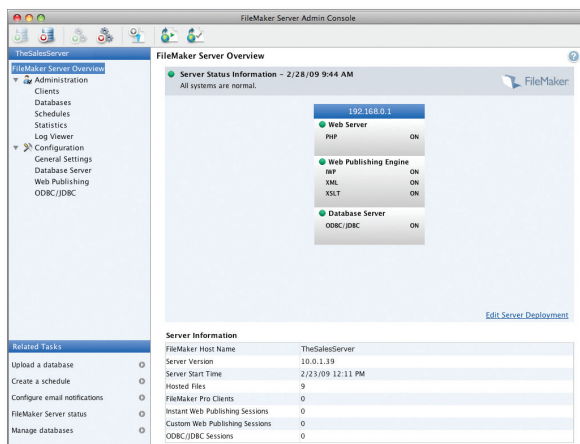
### Share with More Users via Instant Web Publishing

Use Instant Web Publishing to easily publish databases over the web to share with large groups of people\*\*. You can start securely sharing any type of information in just a couple of clicks. Publish registration sites, customer feedback forms, service requests, surveys and more. Instant Web Publishing

requires no special hardware or software and supports popular web browsers.

### Share FileMaker Pro data via ODBC/JDBC

ODBC (Open Database Connectivity) and JDBC (Java Database Connectivity) support makes it possible to read from and write to FileMaker Pro databases hosted by FileMaker Server 10 Advanced with a variety of external programs and development tools. Get up to 50 simultaneous ODBC/JDBC remote connections. These connections can be established by programs running on the local server or from programs running on remote clients.



*The intuitive Admin Console brings all aspects of server management together in one place.*

\* Note performance may vary based on database architecture and complexity.

\*\* FileMaker Server 10 Advanced supports up to 100 simultaneous Instant Web Publishing users versus a maximum of 5 simultaneous web users with a FileMaker Pro client.

## Minimum Requirements

### Windows†

Windows Server 2003 Standard Edition SP2;  
Windows Server 2008 Standard Edition SP1;  
Windows Vista Business SP1

### Mac†

Mac OS X 10.4.11 (Intel and Power PC);  
Mac OS X Server 10.4.11 (Intel and Power PC);  
Mac OS X 10.5.4 (Intel and Power PC);  
Mac OS X Server 10.5.4 (Intel and Power PC)

### For detailed technical specifications, visit:

[www.filemaker.com/products/fms/tech\\_specs.html](http://www.filemaker.com/products/fms/tech_specs.html)

† Version stated is the minimal requirement. The software may also work with later versions certified by FileMaker.



## Volume License Purchase Options

FileMaker provides extensive and progressive volume licensing programs that makes it easy for businesses to outfit their workgroups at a reasonable price. To learn more about FileMaker Volume Licensing Programs, contact the FileMaker Volume Licensing Team at: (800) 725-2747.

## About FileMaker, Inc.

FileMaker, Inc. offers a complete product line including FileMaker Pro, FileMaker Pro Advanced, FileMaker Server, FileMaker Server Advanced, and Bento. These products provide companies with targeted business solutions that are as comprehensive as they are powerful. The FileMaker Business Alliance includes thousands of solution providers available to assist companies with development needs, customized business solutions, and advanced training. For more information, visit [www.filemaker.com](http://www.filemaker.com).

To order FileMaker, Inc. products within the U.S. and Canada, call (800) 325-2747 or visit the FileMaker Online Store at: <https://store.filemaker.com/>

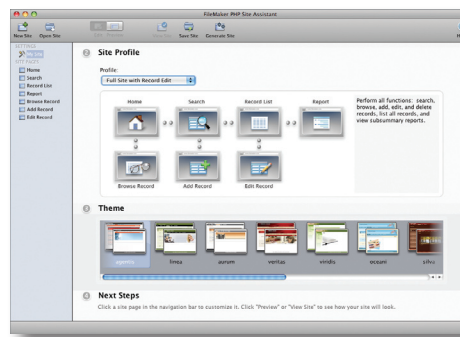
## Utilize the sharing features in FileMaker Server Advanced along with all the server management features included in FileMaker Server 10

## Key Features and Benefits

- **Fast and Easy Setup** - Install and configure in just 20 minutes or less.
- **Administration** - Manage databases remotely and automate administrative tasks from any computer on the network with the Admin Console.
- **Maintenance** - Receive email notifications of errors or completed maintenance activities.
- **Availability** - Your databases are available 24/7 for whenever you need them.
- **Performance** - FileMaker Pro databases run faster - making your whole group more productive! Schedule automated live backups to ensure data integrity.
- **Security** - Ensure your valuable data is secure and protected with SSL encryption and Active Directory/Open Directory support.
- **Network Sharing** - Share your database over a network with large groups of simultaneous users.
- **Web Publishing** - Publish your data to the web using PHP or XSLT. Use the PHP Site Assistant for step-by-step guidance in publishing your databases to the web.
- **Connectivity** - Centralize secure, live connections to Microsoft SQL Server, Oracle and MySQL data sources with ease!
- **Instant Web Publishing** - Use Instant Web Publishing to easily publish and share databases over the web with more simultaneous users than FileMaker Pro alone.
- **ODBC/JDBC Connectivity** - Share data with other applications via server-based ODBC/JDBC support. ODBC/JDBC clients can submit SQL queries to FileMaker databases.
- **Connection Limits** - Supports up to 999 FileMaker Pro users at the same time - 4x more users than in FileMaker Server 10.



*Check your websites before publishing them live using the built-in PHP Preview.*



*The PHP Site Assistant feature allows for the creation of data-driven websites.*

