

### Overview

Corel DESIGNER® Technical Suite X4 is the trusted choice for businesses that need to effectively communicate the strengths of their products and services through clear, informative technical illustrations or diagrams. This complete suite leverages the award-winning graphics power of CorelDRAW® to deliver precision illustration tools, bitmap-to-vector tracing, professional photo-editing, and industry-leading file compatibility, including 3D CAD. Offering an optimised workflow, multi-language support and easy network deployment, this complete suite allows businesses to create powerful technical graphics—fast!

### Opportunity Questions – “How do I qualify a potential Corel DESIGNER Technical Suite X4 customer?”

Any organisation in an engineering, manufacturing or technically driven industry needs precision illustration tools that go beyond standard or creative graphics applications. Corel DESIGNER Technical Suite X4 can help these organisations create clear and informative technical illustrations or diagrams to effectively communicate the strengths of their products and services.

Here are some key questions to ask your customers to help them determine whether Corel DESIGNER Technical Suite X4 is right for them:

#### Questions about the organisation

Does your organisation:

- have a technical documentation department or employ technical illustrators?
- need tools to create and publish technical graphics?
- want to use one integrated technical graphics solution rather than various single-purpose applications?

#### Questions about usage

Does your organization presently, or intend to:

- have legacy files (hand-drawn illustrations or scanned images) that need to be reused or repurposed in newer documents?
- use multiple graphics applications to produce communications materials, such as presentations, reports, collateral, training and instruction manuals?
- use CAD applications or work with CAD files?
- use CAD files to communicate information about your products with non-technical departments across the company and beyond? (i.e. customers and suppliers)

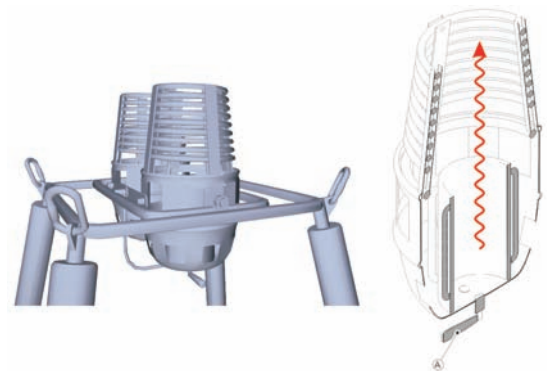
Does your staff create:

- engineering drawings or renderings?
- diagrams (e.g., electrical, network, flow charts)?
- floor plans?
- training materials?
- architectural drawings or renderings?
- parts catalogs?

### “How can Corel DESIGNER Technical Suite X4 help to increase business efficiency?”

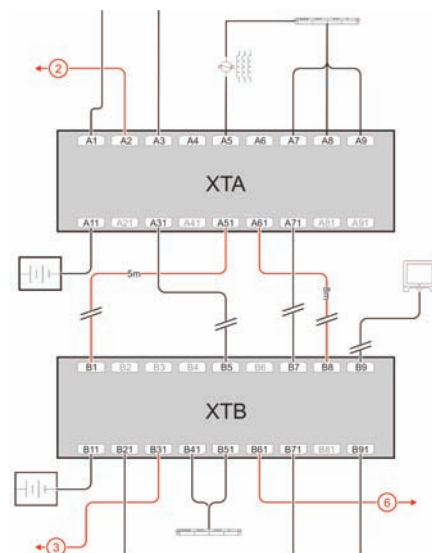
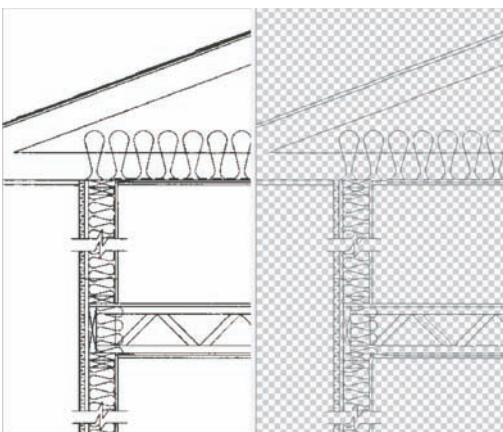
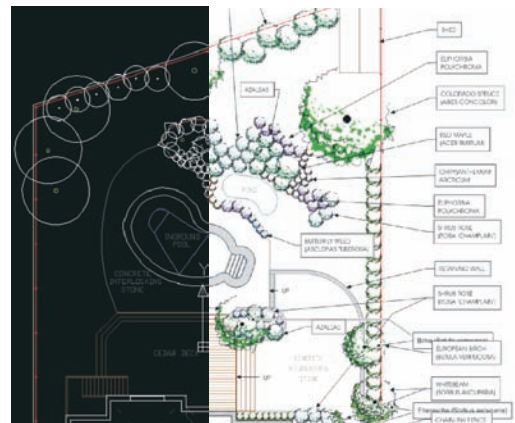
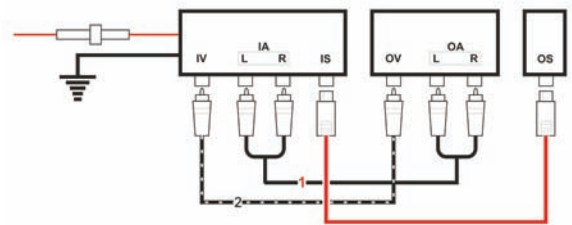
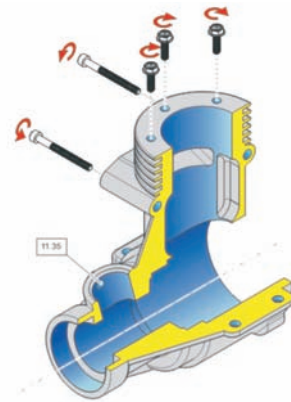
This powerful, precision suite addresses the 'pain points' of technical illustration that industries commonly face:

- Shorter production processes and last minute design changes create the need for a flexible technical documentation suite that can implement design changes quickly. Corel DESIGNER Technical Suite X4 makes it possible for technical illustrators to easily turn a CAD drawing into a presentation, or a drafted design into a precise technical illustration, traversing language barriers by providing clear visual documentation
- Because products often differ in size and specs, it is essential for organisations to be able to customise technical illustrations and documentation to reflect the distinct attributes of each product when creating structured drawings and diagramming components. Corel DESIGNER Technical Suite X4 provides direct CAD and 3D import, referenced drawing components (symbols) and quick and precise drawing tools so organisations can rapidly create and individualise technical illustrations and documentation as necessary



## Target Industries – “Who needs Corel DESIGNER Technical Suite X4?”

- **Discrete Manufacturing** (*Light Manufacturing and Heavy Machinery*) – manufacturers can accelerate new designs, improve product documentation and create stunning communication materials, such as assembly and maintenance instructions, with this suite's precision illustration tools, bitmap-to-vector tracing and industry-leading file compatibility, including 3D CAD
- **Transportation** (*Automotive, Shipping & Aerospace*) – transportation manufacturers can create clear and easily understandable documentation with pictograms, 2D schemas, exploded views and general plans for use in glove box literature, assembly instructions and interactive electronic technical manuals (IETMs)
- **High-Tech & Telecommunications** – high-tech and telecom businesses can benefit from efficiency gains by quickly enhancing their CAD and legacy drawings and producing better looking, more precise schematics and circuit or wiring diagrams
- **Architecture, Engineering, and Construction (AEC)** – AEC companies receive the tools to communicate design ideas more efficiently, with graphically rich CAD-sourced graphics that provide a single source for obtaining presentation graphics, diagrams and documentation
- **Chemicals & Pharmaceuticals** – companies are able to conceptualise, design and share information and data-rich illustrations in a variety of media, including electronic and print publications of instruction manuals, diagrams and flowcharts
- **Energy** (*Electricity, Oil & Gas*) – electric and gas utility departments can integrate and repurpose designs and illustrations into the required documents and communication materials such as power grid and circuit diagrams, reducing revision and life cycle costs and increasing productivity by removing the need to design from scratch
- **Apparel** – Clothing designers and manufacturers can prepare the production cycle for designing clothing lines and fabric patterns by creating precise illustrations and integrating these into product data management (PDM) systems



### Target User Segments – “Why is Corel DESIGNER Technical Suite X4 perfect for these users?”

**Technical Illustrators** who are formally trained to work in technical documentation and produce graphics for assembly instructions, user guides, manuals and wiring diagrams etc., can:

- integrate files from various applications, including 3D designs (AutoCAD® DWG/DXF™, VRML, U3D), CAD, PDF, Microsoft® Visio® and other graphics formats into their workflows, and accomplish all of their tasks using a single, comprehensive technical graphics suite
- use dedicated technical illustration features like isometric drawing, callout, and dimension tools and connector lines to add unprecedented clarity and precision to their drawings
- work with over 100 different file formats and repurpose legacy files to a variety of industry standard formats, including print, the Web and Interactive Electronic Technical Manuals (IETMs)
- *take advantage of this upsell opportunity:* Right Hemisphere® Deep Exploration™ 5.5 CCE provides support for over 80 3D CAD file formats from major 3D CAD systems, such as CATIA®, Pro/ENGINEER®, UG NX® (Unigraphics), SolidWorks and more

**Technical Graphics Users** who work in a technical environment and spend part of their workday creating graphics, including diagrams used in presentation material, floor plans and schematics, can:

- easily create graphics from scratch or by repurposing legacy files, or even convert scanned images into editable illustrations
- create clear and accurate technical graphics using intuitive precision drawing and diagramming tools that make it easier for them to create and position objects accurately
- work seamlessly with clients and colleagues with enhanced compatibility with many enterprise-standard file formats, including 3D files, Microsoft Visio, PDF 1.7 and PDF/A, etc.
- edit images and create professional-looking graphics with Corel PHOTO-PAINT®, then export to office applications for presentations, or publish to the Web

**Engineering Offices & CAD Users** who work primarily with CAD applications and need to enhance their drawings for graphically rich presentations and materials can:

- use 2D CAD and 3D design (DWG/DXF, SketchUp™) import tools and complement their drawings with professional graphics and illustrations
- create and edit graphical elements, photos and other images in an easy-to-use, complete technical graphics suite, including professional image-editing capabilities with Corel PHOTO-PAINT
- leverage unbeatable file compatibility to work with over 100 different file formats and publish to any required format

### Competitive Advantages How is Corel DESIGNER Technical Suite X4 better suited than...

**...Creative Graphics Applications** (like CorelDRAW® Graphics Suite, Adobe® Creative Suite®, etc.)

Corel DESIGNER Technical Suite X4 is:

- specifically tailored to support the technical illustration workflow with 2D and 3D CAD import and dedicated precision tools such as dimension and callout tools, projected drawing capabilities and more
- the industry standard in file compatibility for supporting CAD files (e.g. DWG, DXF), WebCGM, SVG, PDF/A and over 100 other graphics file formats
- a powerful combination of CorelDRAW Graphics Suite functionality plus added technical illustration and precision drawing features

**...other Technical Graphics applications** (like Microsoft Visio, ACD Canvas, etc.)

Corel DESIGNER Technical Suite X4:

- gives you precision diagramming tools to produce simple or complex diagrams, plus illustration and photo-editing capabilities to create stunning images and graphics
- allows you to import over 100 standard file formats (including PDF, DXF and DWG) and gives you the ability to convert legacy images into editable vector graphics

**...CAD applications** (like AutoCAD® LT, AutoCAD®, VectorWorks, Microstation, etc.)

Corel DESIGNER Technical Suite X4 is :

- a single, integrated solution for the creation, enhancement, and visual presentation of technical content and includes professional and creative graphic tools
- a complement to CAD graphics by offering easy-to-use, graphically rich functionality to convert your CAD drawings into visually stimulating communication pieces



## New and Enhanced Features

### Access Technical Design Assets

- **New!** Quickly unlock and repurpose data in legacy blueprints with Corel® PowerTRACE™ X4
- **New!** Open and work with 3D CAD files—such as 3D DXF/DWG, SketchUp, 3DS, VRML—without a 3D CAD license
- **New!** Convert 3D files to 2D and import as illustration sources in Corel DESIGNER X4
- **Upsell Opportunity:** Choose additional native 3D CAD file format support\*, including CATIA, Pro/E, UG, SolidWorks, Inventor and more

\*Encourage your clients to take advantage of this add-on—they'll double their 3D CAD editing abilities and benefit from increased file format support for directly accessing 3D designs.

### Illustrate

- **New!** Gain better control and accuracy when drawing, sizing and rotating shapes with a live preview and the new Object Coordinate docker
- **Enhanced!** Create advanced and precise illustrations with a full range of intuitive technical and illustration tools, such as callouts and dimension tools
- Benefit from isometric and other projected drawing modes, plus 4,000 standard symbols that allow you to enhance imported 3D CAD drawings with all the details commonly used in technical illustration

### Diagram

- **New!** Make wiring diagrams and flow charts easier to read and edit with enhanced connector lines, halos on curves and new arrowheads tools
- **Enhanced!** Easily convert curves to connectors and automatically adjust the path of connector lines to avoid other objects
- **Enhanced!** Work with files created in other diagramming programs, with enhanced tools and support for Microsoft Visio 2003 and 2007 files

### Photo-Edit

- **New!** Achieve professional-quality colour and tone correction with the new Image Adjustment Lab
- **Enhanced!** Gain control, improve accuracy and simplify the image cutting process with the enhanced Cutout Lab
- **New!** Work with photos in a wide range of formats, including raw files from over 300 camera models

For a full list of New & Enhanced features, visit [www.corel.co.uk/designer](http://www.corel.co.uk/designer)

## Part Number, UPC Codes and Pricing

Product	Part Number	UPC Code	SRP* GBP	SRP* EUR
Corel DESIGNER Technical Suite X4 - Full - English	CDTSX4IEPC	7-35163-12179-7	£638	€798
Corel DESIGNER Technical Suite X4 - Upgrade - English	CDTSX4IEPCUG	7-35163-12180-3	£319	€399
Corel DESIGNER Technical Suite X4 - Educational DVD - English / French / German	CDTSX4LMPDVDVA	7-35163-12083-7	£80	€99
Corel DESIGNER Technical Suite X4 - User Guide - English	MANCDTSX4ENPC	7-35163-12088-2	£18	€25
Right Hemisphere Deep Exploration 5.5 CCE - Unlock License Key	KEYCADEDDEML	N/A	£1,119	€1,399

\*Suggested retail price. Dealer may sell for less. All prices are excluding VAT.

## System Requirements

- Windows® XP (with latest Service Pack), or Windows Vista® (32-bit or 64-bit editions)
- 512 MB of RAM, 1.2 GB hard disk space
- 800 MHz processor (Pentium® III, or equivalent)
- 1,024 × 768 or better monitor resolution
- CD-ROM drive
- Mouse or tablet

## Upgrade Information

Customers of previously licensed versions of Corel DESIGNER Technical Suite and Corel products listed below are eligible for the upgrade price. (Trial, NFR, Educational and OEM versions are not eligible).

- Corel DESIGNER® Technical Suite 12
- Corel DESIGNER® Professional (SG and 12)
- Corel DESIGNER® (any version)
- CorelDRAW® Graphics Suite X3 or later

### Other Corel products:

- Micrografx Designer® 7 or later
- Micrografx Graphics Suite® 2 or later

## What's Included

### Main Applications

- Corel DESIGNER® X4
- Corel PHOTO-PAINT® X4
- Corel® PowerTRACE™ X4
- Right Hemisphere® Deep Exploration™ 5.5 CCE
- Corel CAPTURE™ X4

### Supporting Applications

- Microsoft® Visual Basic® for Applications 6.4
- Barcode Wizard
- Duplexing Wizard

### Documentation

- User Guide
- Online Help
- VBA Programming Guide
- Deployment Guide

### Training

- CorelTUTOR™, including 6 new Corel DESIGNER tutorials and 5 new Corel PHOTO-PAINT tutorials